

Contexte

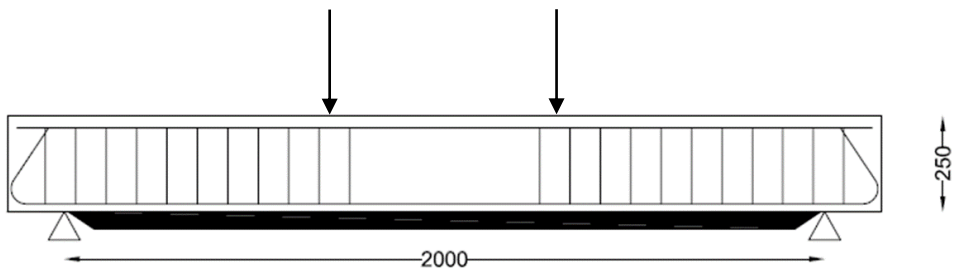
Laboratoire des Matériaux Composites pour la Construction (Lyon)

Réhabilitation et renforcement des structures en béton armé et maçonneries

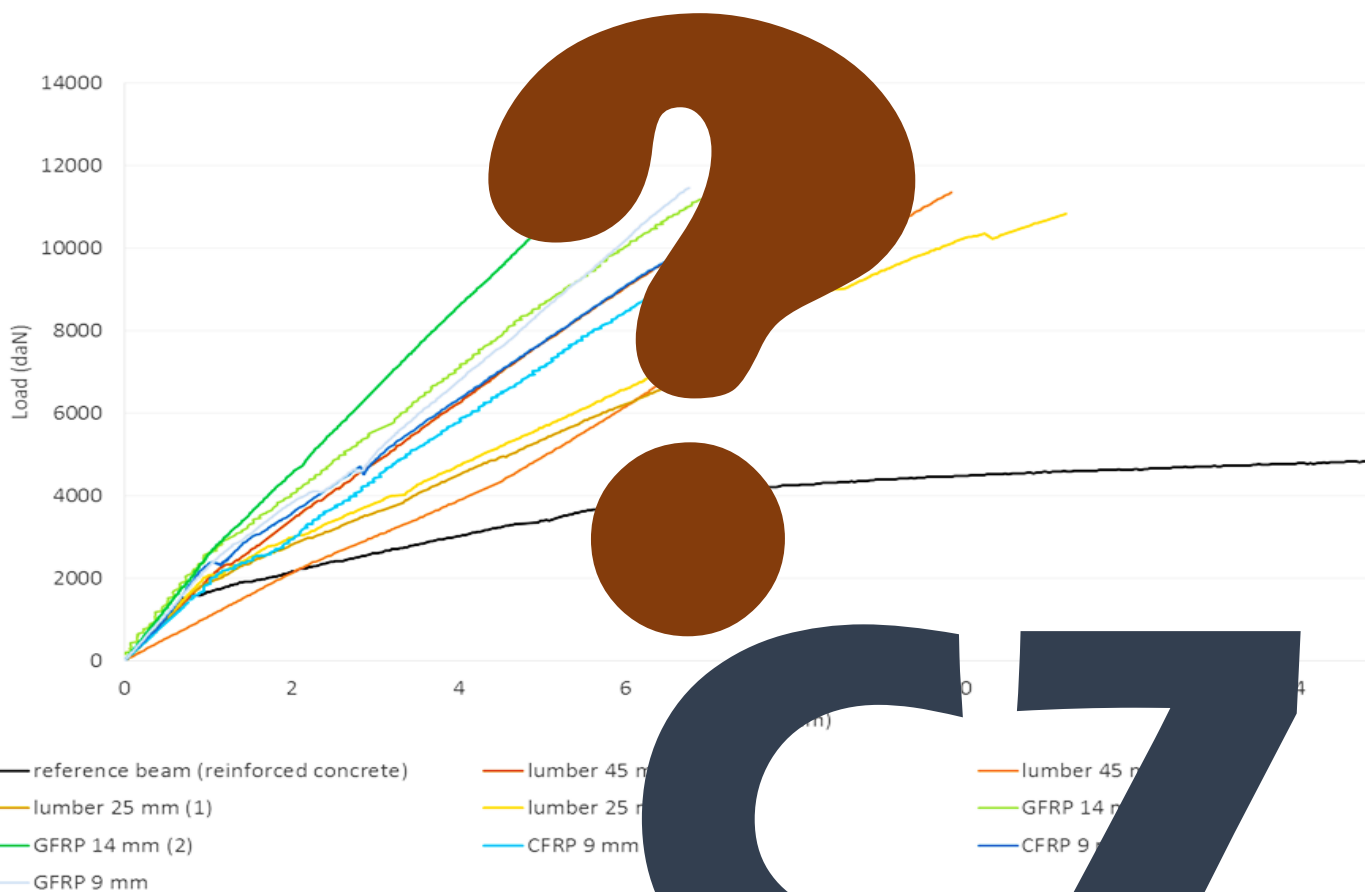
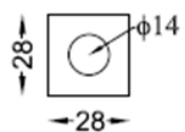
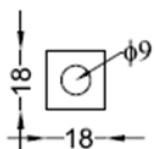
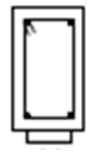
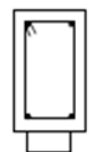
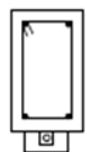
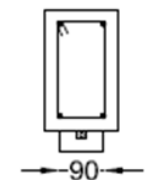
Réhabilitation et renforcement des structures béton armé par des renforts composites naturels



Renforts bois avec ou sans barres PRFC ou PRFV



Bois + PRFC 9 mm Bois + PRFV 14 mm Bois 45x90 mm² Bois 25x90 mm²



C7