

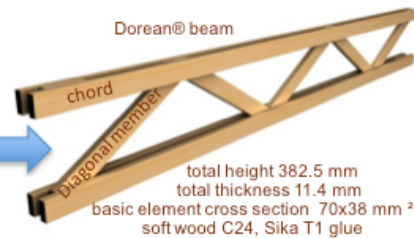
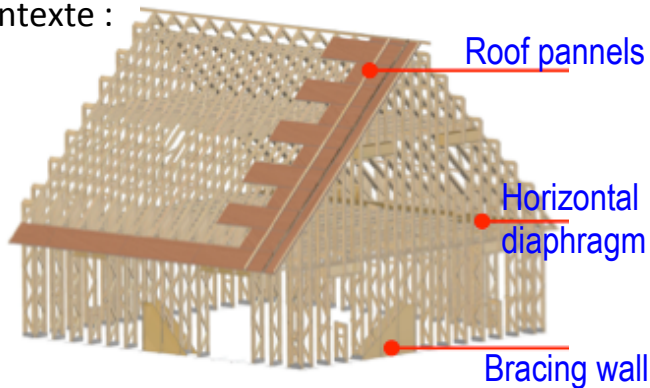
MESURES DE CHAMPS SUR UNE POUTRE ENTAILLÉE PAR LA MÉTHODE DE LA GRILLE

(FULL FIELD MEASUREMENTS ON NOTCHED BEAMS BY GRID METHOD)

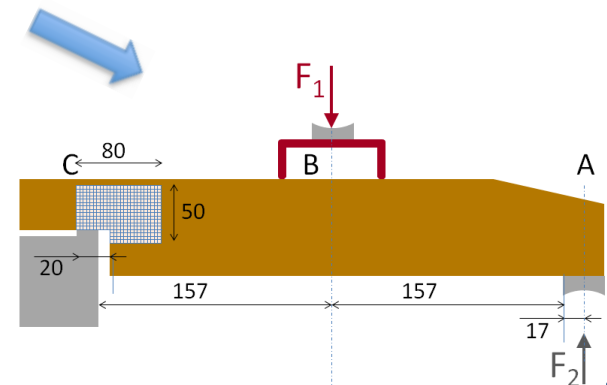
Eric Fournely, Evelyne Toussaint, R. Moutou Pitti, M. Grédiac

Université, Université Blaise Pascal, Institut Pascal, BP 10448, 63000 CLERMONT-FERRAND,
CNRS, UMR 6602, Institut Pascal, 63171 AUBIERE, France

Contexte :

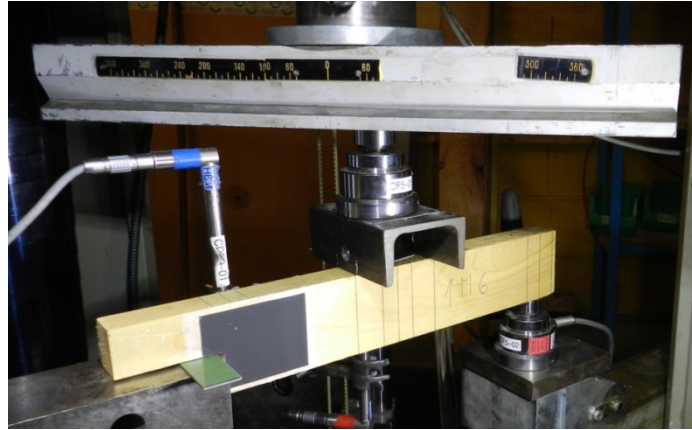
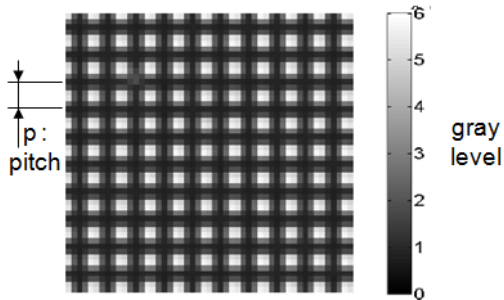


cisaillement et traction
perpendiculaire au fil
→ Rupture fragile



Démarche expérimentale : mesure de champs

- méthode de la grille



- Spécimens testés

